

TESTS:

GENERAL TEST

1. OPERATING FORCE:

- FORCE FOR LOCKING -  $14 \pm 3$  Kgf
- OPERATING TORQUE OF THE HANDLE WITH STRIKER ASSY -  $10 \pm 3$  Kgf.cm
- OPERATING TORQUE OF THE HANDLE WITHOUT STRIKER ASSY -  $10 \pm 3$  Kgf.cm

STRENGTH TEST

1. STRIKER ASSY. DISENGAGEMENT FORCE = 50 Kgf MIN

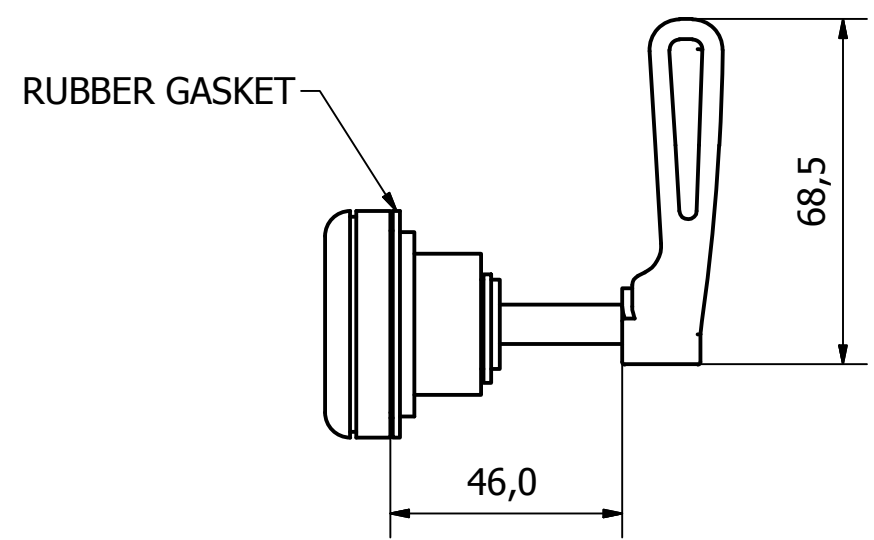
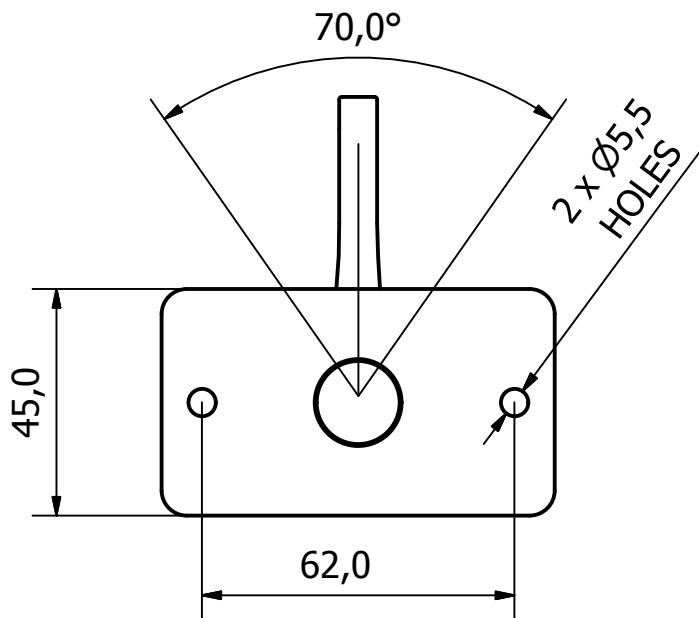
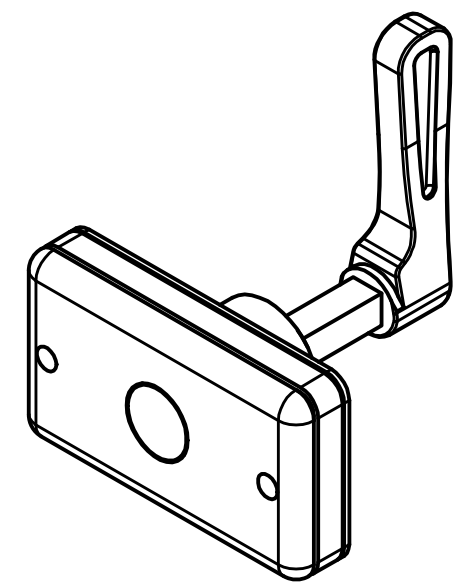
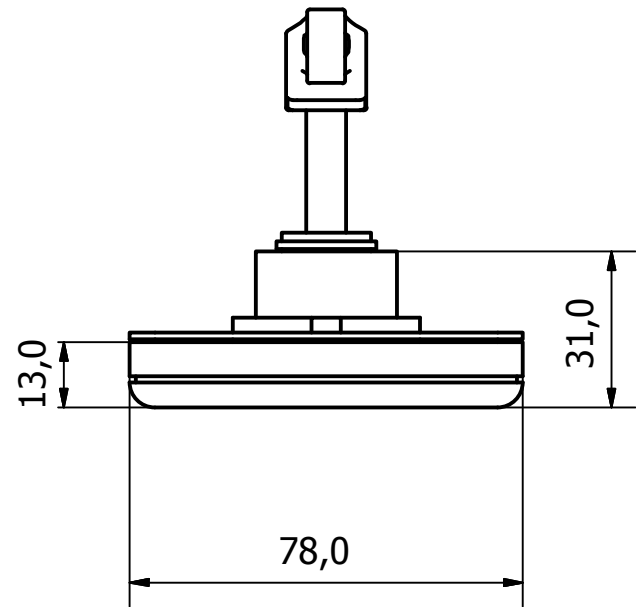
DURABILITY CHARACTERISTICS TEST

1. REPEATED OPERATION TEST: NO. OF CYCLES = 30,000

TEST FOR POWDER COATED PARTS

1. ADHENSION TEST : PROCEDURE AS PER BS:3900-PART E6
2. SALT SPRAY TEST : TIME DURATION = 48 Hrs
3. HUMIDITY TEST : PROCEDURE AS PER BS:3900 - PART F2

TEST TO BE CARRIED OUT FOR 240Hrs



NOTE:

LATCH BODY CONSISTS OF MILD STEEL AND PLASTIC COMPONENTS WITH A BLACK FINISH.

WINDOW CATCH CONSISTS OF MILD STEEL COMPONENTS WITH A ZINC AND GOLD FINISH INCLUDING A BLACK RUBBER STOP

FOR STRIKER ASSY DETAILS SEE PAGE 2

REV	DESCRIPTION	DATE	APPROVED
3	LATCH BODY PROFILE MODIFIED	16/10/18	U.F
2	TEST NOTE AND STRIKER ASSY DETAILED	13/12/17	U.F
1	VALIDATION COMPLETE	07/11/17	A.P

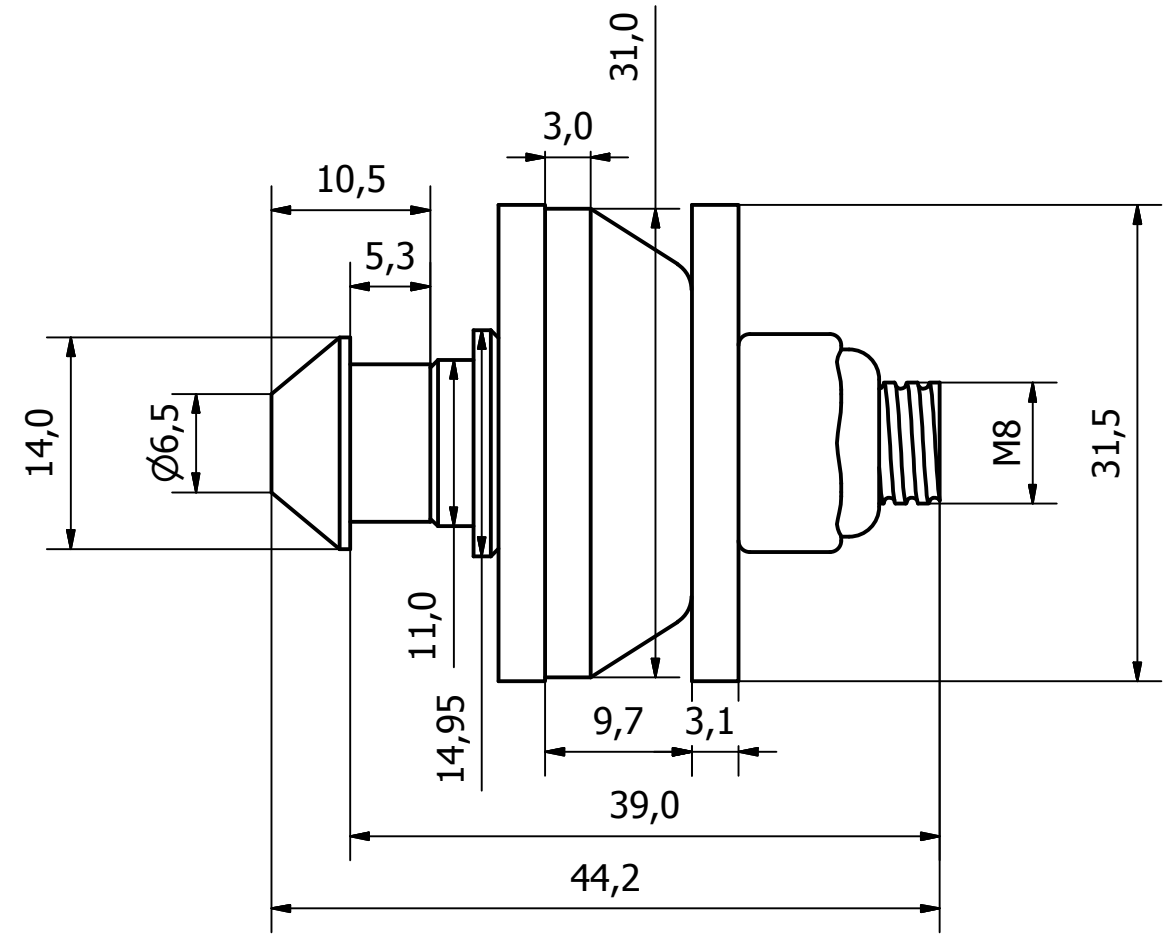
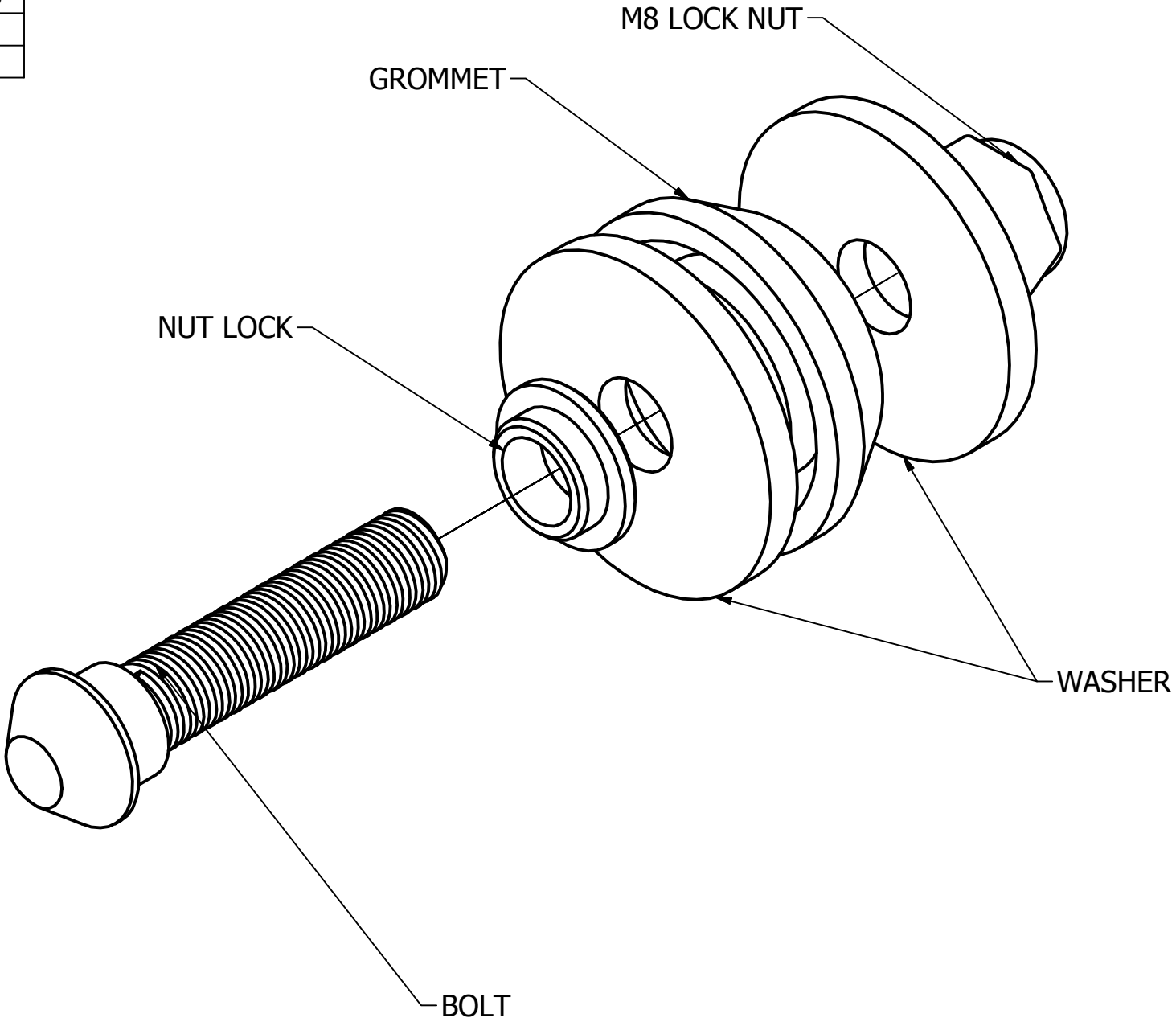
GENERAL TOLERANCES ON LENGTHS
0.5 - 6 ± 0.1mm
6 - 30 ± 0.2mm
30 - 120 ± 0.3mm
120 - 400 ± 0.5mm
400 - 1000 ± 0.8mm
1000 - 2000 ± 1.2mm
2000 - 4000 ± 2.0mm

ALBERT JAGGER LTD  
 GREEN LANE  
 WALSALL PHONE: 01922 471000  
 WEST MIDLANDS FAX: 01922 648021  
 WS2 8HG

THIS DRAWING & THE DESIGN SHOWN ARE THE PROPERTY OF ALBERT JAGGER LTD AND MUST NOT BE USED OR COPIED BY A THIRD PARTY WITHOUT PERMISSION

DRAWN BY U.F	CHECKED BY A.P	THIRD ANGLE PROJECTION	SCALE 1:1.5	MATERIAL SEE NOTE	MASS 0.252 kg	FINISH SEE NOTE	Date 07/11/2017	ALL DIMS IN MM UNLESS STATED DO NOT SCALE	A3
<b>albert Jagger</b>								BONNET LATCH WITH PACKED WINDOW CATCH	
1012-100								Edition 3	Sheet 1 / 2

DESCRIPTION	MATERIAL	FINISH
BOLT	EN1A TO BS:970 OR 11C10S25 IS:4431	ZINC + YELLOW PASSIVATED
NUT LOCK	EN1A TO BS:970	ZINC + YELLOW PASSIVATED
WASHER	CRCA SHEET GRADE 'DD', TO IS:513	ZINC + YELLOW PASSIVATED
GROMMET	TPE, HARDNESS 70 +/- SHORE 'A'	BLACK
LOCK NUT	M/STEEL	ZINC + CLEAR PASSIVATED



REV	DESCRIPTION	DATE	APPROVED
3	LATCH BODY PROFILE MODIFIED	16/10/18	U.F
2	TEST NOTE AND STRIKER ASSY DETAILED	13/12/17	U.F
1	VALIDATION COMPLETE	07/11/17	A.P

GENERAL TOLERANCES ON LENGTHS
0.5 - 6 ± 0.1mm
6 - 30 ± 0.2mm
30 - 120 ± 0.3mm
120 - 400 ± 0.5mm
400 - 1000 ± 0.8mm
1000 - 2000 ± 1.2mm
2000 - 4000 ± 2.0mm

ALBERT JAGGER LTD  
 GREEN LANE  
 WALSALL PHONE: 01922 471000  
 WEST MIDLANDS FAX: 01922 648021  
 WS2 8HG

THIS DRAWING & THE DESIGN SHOWN  
 ARE THE PROPERTY OF ALBERT JAGGER LTD  
 AND MUST NOT BE USED OR COPIED BY A  
 THIRD PARTY WITHOUT PERMISSION

DRAWN BY U.F	CHECKED BY A.P	SCALE 2:1	MATERIAL SEE TABLE	MASS -	FINISH SEE TABLE	Date 07/11/2017	ALL DIMS IN MM UNLESS STATED DO NOT SCALE	A3
<b>albert Jagger</b>							BONNET LATCH WITH PACKED WINDOW CATCH	
							1012-100	Edition 3