

Emergency Response Vehicles



The ability of emergency service vehicles to perform efficiently at all times is paramount to the emergency services. Reliability, efficiency and visibility are key to all areas of the emergency services and the vehicles in the industry are under great strain. We understand how vital it is that every component of the vehicle is consistently reliable in emergency situations.

In the emergency service sector, manufacturers are demanding engineering excellence and design innovation in their components to keep up with the challenging demands of the vehicles on the front line. We work tirelessly to ensure that our products are not just able to keep up with demands, but they can also cater to future demands of the industry.

Supply Without Compromise

Transport Hardware



Adhesives & Sealants

Providing critical bonding and sealing solutions, adhesives and sealants enhance vehicle performance and durability. From securing vital components to weatherproofing, they play a vital role in ensuring the reliability and effectiveness of emergency response vehicles.



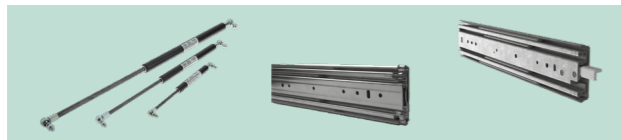
Electrical

Camera systems and LED lighting are critical in enhancing the capabilities of emergency service vehicles. Cameras aid in situational awareness and response, while LED lighting ensures visibility in all conditions, improving safety and effectiveness during emergency response operations.



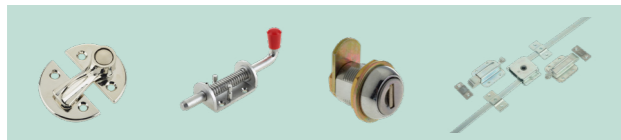
Fuel Protection

Preventing fuel theft, contamination, and tampering, fuel protection devices ensure reliable and uninterrupted operations during critical situations. By preserving fuel integrity, these devices enhance the readiness and efficiency of emergency response vehicles.



Gas Struts & Telescopic Slides

Facilitating easy and secure access to equipment compartments, gas struts ensure quick response times. Telescopic slides enable smooth and controlled movement of essential supplies, optimising storage and retrieval. Together, they enhance vehicle functionality, efficiency, and safety.



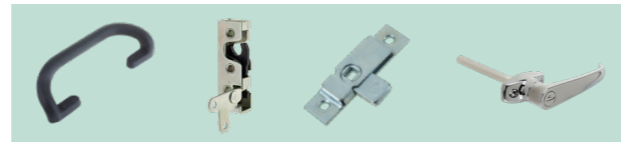
General Hardware

Hardware such as spring bolts and rod locks are indispensable in emergency service vehicles, securing equipment and compartments during transit, preventing accidents. These hardware components are crucial for safety and efficiency in emergency operations.

Emergency Response Vehicles

In the emergency service sector, manufacturers are demanding engineering excellence and design innovation in their components to keep up with the challenging demands of the vehicles on the front line.

Our products are universally suitable for emergency service vehicles, from ambulances to rapid response vehicles, interceptor vehicles and much more.



Handles, Locks, & Latches

Handles provide easy access to compartments, while locks and latches ensure equipment and supplies are securely stored during transportation. These components are essential for quick and reliable deployment of resources in critical situations, enhancing overall effectiveness.



Hinges

Enabling easy access to equipment compartments, hinges facilitate rapid deployment of essential equipment. High-quality and reliable hinges ensure durability and long-term performance, ensuring that emergency responders have quick and reliable access to critical tools and supplies.



Rubber Buffers

Shock-absorbing components protect against impacts and vibrations during high-stress operations. By minimising wear and tear on vehicle equipment and ensuring a smoother ride, buffers contribute to the overall effectiveness and longevity of emergency response vehicles.



Sealing Profiles

Essential for maintaining the integrity of emergency service vehicles, sealing profiles provide weatherproofing and insulation, protecting vehicle interiors and equipment from environmental factors. They ensure a secure and controlled environment, safeguarding sensitive gear and electronics.

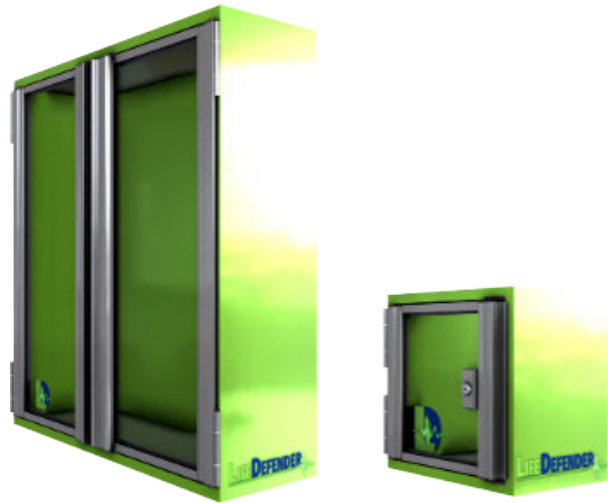


Ventilators

Ventilators are vital features in emergency service vehicles. Rotary ventilators enable controlled airflow within emergency service vehicles, optimising air quality for occupants and equipment. Louvre ventilators help regulate temperature and prevent condensation.



LifeDefender™ Cabinet Security System



LifeDefender™ Cabinet Security frames play a significant role in keeping safe EMS workers and their patients in the event of an accident.

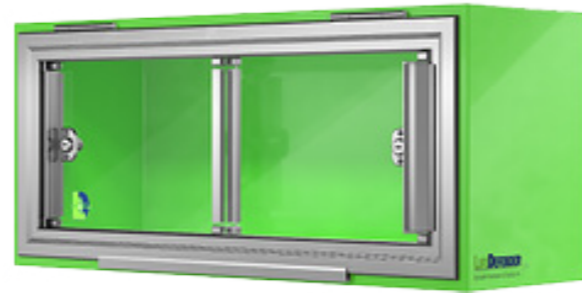
LifeDefender™ Cabinet Security frames play a significant role in keeping safe EMS workers and their patients in the event of an accident.

While ambulance workers and patients' safety are paramount, LifeDefender™ security frames also create several significant business advantages for manufacturers. Designed to provide a solution to meet *SAE, CAAS GVS, & NFPA safety standards.

Working with the industry over the years has aided the development of newer, better, safer occupant safety standards. An in-depth understanding of these standards has led to the design of a unique cabinet frame system that helps ensure standards are met.

Options

- Fixed Frame Gen I
- Unframed Gen II
- Restocker Frame Gen I



Fixed Frames

Fixed Access Frames increase the safety and security of the vehicle in an accident due to the latching mechanism on our panels.

Sliding Panel

- One-handed opening
- Slam closing with auto-latching feature
- Frame clips designed for easy installation
- Frame corners have reinforced keys for extra strength
- Removable panels

Gen 3 Updates

- Polycarbonate panels are now replaceable
- Key locking options available on fixed frames
- New Tether system adds extra level of safety in crash tests
- Sliding panel opens 1.1" wider than Gen 2
- Clear anodised aluminum hinges increasing scratch resistance
- Can be shipped with protective film
- Soft Cover added to inventory control brackets

CUTF Friction Hinges	CUTN User Supplies Hinge	CUBF Friction Hinges	CUBN User Supplies Hinge	CUCX Min 4.00" Wide Drawer	"CU" OPTIONS - LOCKING ADD-ONS - TAG OUT BRACKETS - BRUSHED ALUMINUM PANEL OPTION - DRY ERASE PANEL OPTION - PROTECTIVE FILM ON OUTER FRAME
Min 6.00" Wide x 4.00" Tall					

CULF Friction Hinges	CULN User Supplies Hinge	CURF Friction Hinges	CURN User Supplies Hinge	NOTE: Weight Ratings are deliberately omitted from this sheet. Each manufacturer is responsible for establishing acceptable weight ratings for their own cabinet designs as used in conjunction with Life Defender Cabinet Faces in accordance with SAE standard J3058. Austin will be happy to assist in this development and can also provide a customized version of this order sheet that allows your weights to auto-populate as you create new parts using this sheet.
Min 4.00" Wide x 6.00" Tall				

Restocker Frames

Restocker, hinged door access frames increase the safety and security of the vehicle in an accident due to the latching mechanism on our panels.

Single Fixed Panel

- One-handed opening
- Slam closing with auto-latching feature
- Frame corners have reinforced keys for extra strength
- Used for smaller openings
- Can be oriented to open horizontally or vertically

Sliding Panel

- One-handed opening
- Slam closing with auto-latching feature
- Frame corners have reinforced keys for extra strength
- Gas spring assist when lifting frame

CFTG Min 15.00" Wide x 7.00" Tall Slider Panels Gas Spring Assist	CFBD Min 15.00" Wide x 7.00" Tall Fixed Panel Gas Spring Assist	CFBD Min 15.00" Wide x 7.00" Tall Slider Panels Damper Assist	CFBD Min 15.00" Wide x 7.00" Tall Fixed Panel Damper Assist	CFFX Min 15.00" Wide x 7.00" Tall Slider Panels
CFLG Sliders - Min 15.00" Wide x 12.00" Tall Gas Spring Assist	CFLX Free Swing Door	CFRG Sliders - Min 15.00" Wide x 12.00" Tall Gas Spring Assist	CFRX Free Swing Door	"CF" OPTIONS - LOCKING ADD-ONS - TAG OUT BRACKETS - BRUSHED ALUMINUM PANEL OPTION - DRY ERASE PANEL OPTION - PROTECTIVE FILM ON OUTER FRAME
CFBD Fixed Panel - Min 7.00" Wide x 12.00" Tall Gas Spring Assist	CFRX Free Swing Door	CFRG Fixed Panel - Min 7.00" Wide x 12.00" Tall Gas Spring Assist	CFRX Free Swing Door	

Unframed Hinged Door

Both single and double panel Gen II Unframed Hinged Doors offer security with flexibility and a functional 180-degree opening range..

Single Gen II

- One-handed operation
- Slam closing with auto-latching feature
- Ability to open horizontally or vertically
- Left-hand and right-hand configurations
- NEW locking option now available

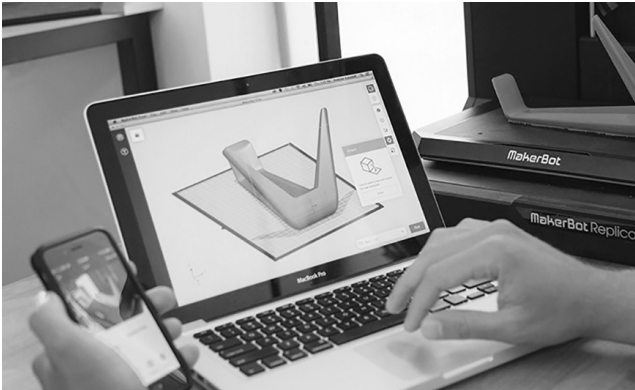
Double Door Gen II

- NEW one-handed operation
- NEW locking option now available
- Improved strength due to stiffeners along the center
- Contact length of latch/striker can be adjusted

CWTG Min 10.00" Wide x 6.00" Tall Fixed Panel Gas Spring Assist	CWTX Min 10.00" Wide x 6.00" Tall Fixed Panel Free Swing Door	CWBD Min 10.00" Wide x 6.00" Tall Fixed Panel Damper Assist	CWBX Min 10.00" Wide x 6.00" Tall Fixed Panel Free Swing Door	CWDX Min 12.00" Wide x 10.00" Tall Fixed Panel Free Swing Doors
---	---	---	---	---

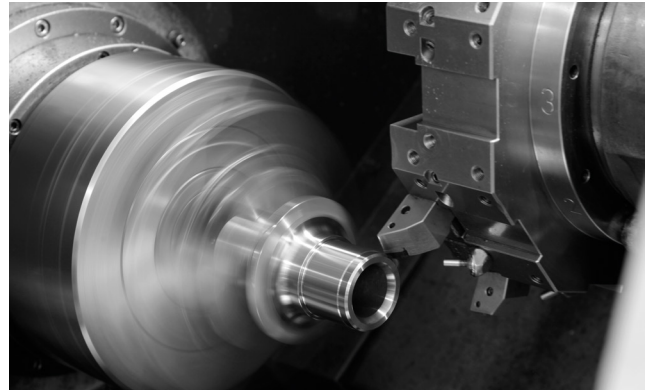
CWLG Min 6.00" Wide x 10.00" Tall Fixed Panel Gas Spring Assist	CWLX Min 6.00" Wide x 10.00" Tall Fixed Panel Free Swing Door	CWRG Min 6.00" Wide x 10.00" Tall Fixed Panel Gas Spring Assist	CWRX Min 6.00" Wide x 10.00" Tall Fixed Panel Free Swing Door	"CW" OPTIONS - LOCKING ADD-ONS - TAG OUT BRACKETS - BRUSHED ALUMINUM PANEL OPTION - DRY ERASE PANEL OPTION - PROTECTIVE FILM ON OUTER FRAME
Min 6.00" Wide x 10.00" Tall				

Supply Without Compromise



Design & Rapid Prototyping

To strive to be the best is just part of our ethos at Albert Jagger, we use the latest technologies to aid our designers so that we can develop the next generation of hardware and components. We use rapid prototyping so that we can see our developing designs and improve on them.



Manufacturing

As part of the process to ensure that we supply our customers with flexibility, versatility and diversity we have our own in-house manufacturing department. As the market leaders in our industry, we don't just supply parts, we design and manufacture them too.



ISO 9001 Quality

We at Albert Jagger Limited recognise the need to focus on customer satisfaction and that means not only meeting their expectations but exceeding them. One of our key objectives is to continually strive to improve quality of both product and service. To achieve this we maintain quality management system compliant with ISO 9001: 2015.



Customer Service

Our future depends on the success of our customers that is why we like to take a long term view to building relationships whilst delivering an unrivalled service and inspiring trust and confidence. With 130 years of history, we wouldn't be in the position we are if we hadn't looked after and listened to our customers.

Head Office

Centaur Works, Green Lane,
Walsall, West Midlands,
WS2 8HG. United Kingdom.

Contact

e sales@albertjagger.co.uk
t +44 (0) 1922 471 000

www.albertjagger.co.uk