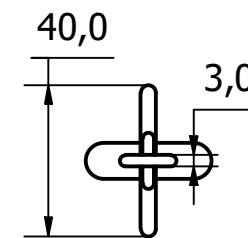
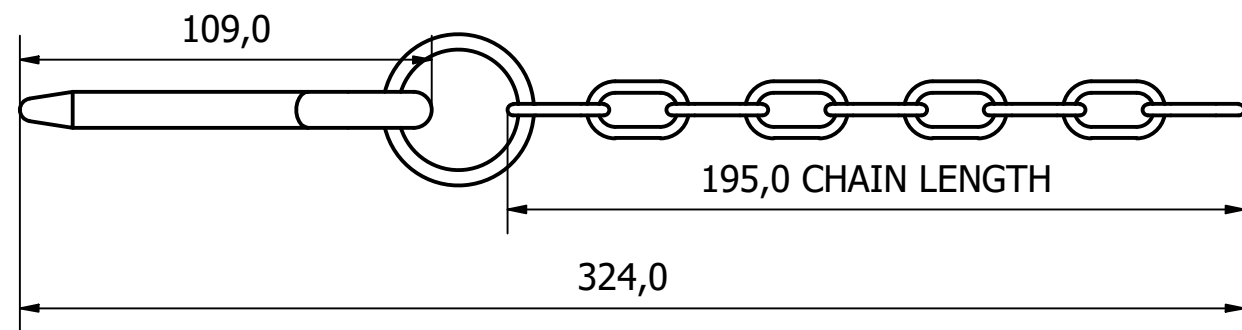
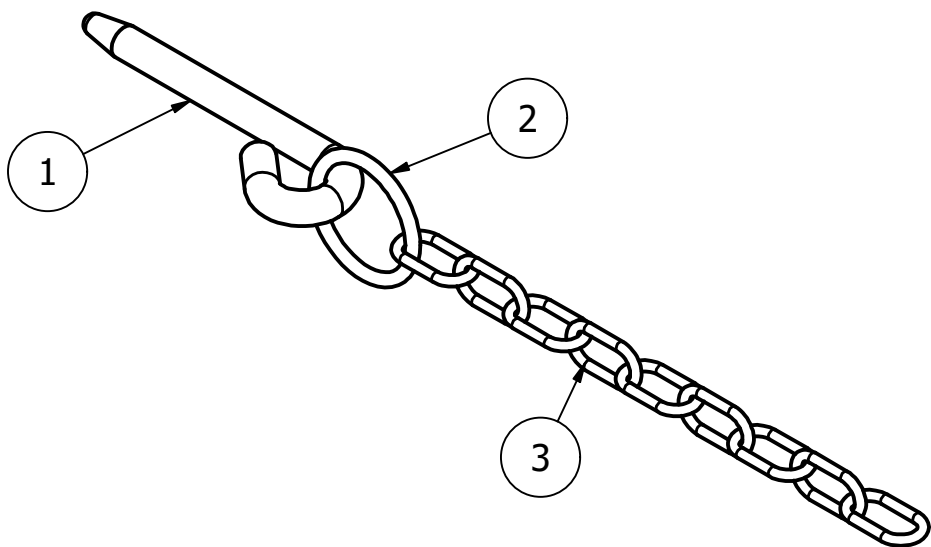
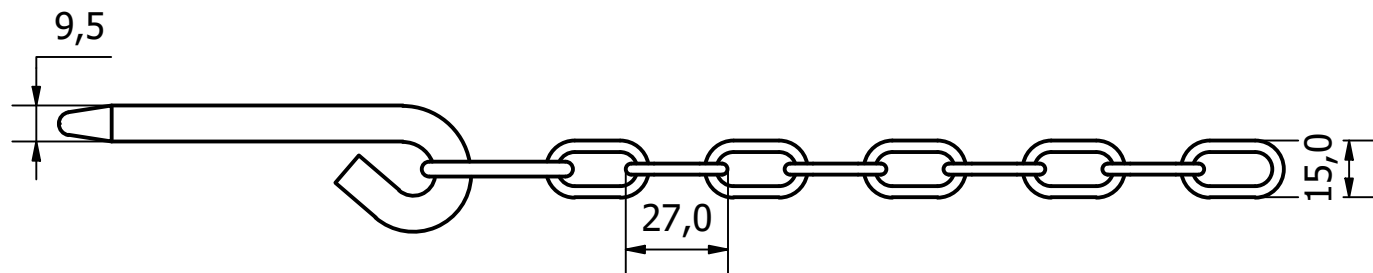


| PARTS LIST | | | |
|------------|-----|-------------|-----------------------------------|
| ITEM | QTY | PART NUMBER | DESCRIPTION |
| 1 | 1 | 2582-002-1 | M/STEEL COTTER - ZINC PLATED |
| 2 | 1 | 2582-002-2 | M/STEEL RING - ZINC PLATED |
| 3 | 9 | 2582-002-3 | M/STEEL CHAIN LINKS - ZINC PLATED |



| REV | DESCRIPTION | DATE | APPROVED |
|-----|---------------------|----------|----------|
| 1 | VALIDATION COMPLETE | 12/06/19 | A.P |

| GENERAL TOLERANCES ON LENGTHS | |
|-------------------------------|--|
| 0.5 - 6 ± 0.1mm | |
| 6 - 30 ± 0.2mm | |
| 30 - 120 ± 0.3mm | |
| 120 - 400 ± 0.5mm | |
| 400 - 1000 ± 0.8mm | |
| 1000 - 2000 ± 1.2mm | |
| 2000 - 4000 ± 2.0mm | |

ALBERT JAGGER LTD
 GREEN LANE
 WALSALL PHONE: 01922 471000
 WEST MIDLANDS FAX: 01922 648021
 WS2 8HG

THIS DRAWING & THE DESIGN SHOWN
 ARE THE PROPERTY OF ALBERT JAGGER LTD
 AND MUST NOT BE USED OR COPIED BY A
 THIRD PARTY WITHOUT PERMISSION

DRAWN BY
 A.S

CHECKED BY
 A.P



SCALE
 1 : 2

MATERIAL
 SEE DRAWING

MASS
 0.122 kg

FINISH
 SEE DRAWING

Date
 13/05/2019

ALL DIMS IN MM
 UNLESS STATED
 DO NOT SCALE

A3



ROUND COTTER PIN AND CHAIN
 2582-002

| | |
|--------------|----------------|
| Edition 1 | Sheet 1 / 1 |
|--------------|----------------|