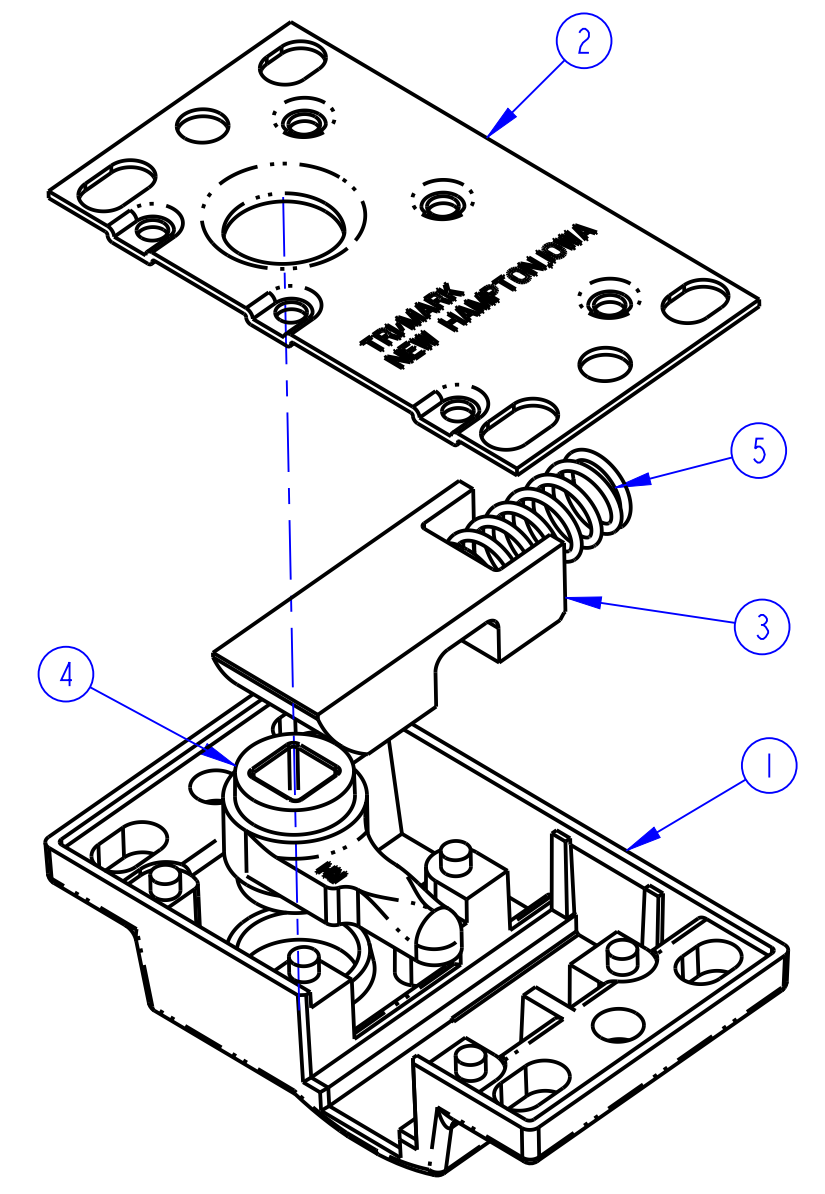
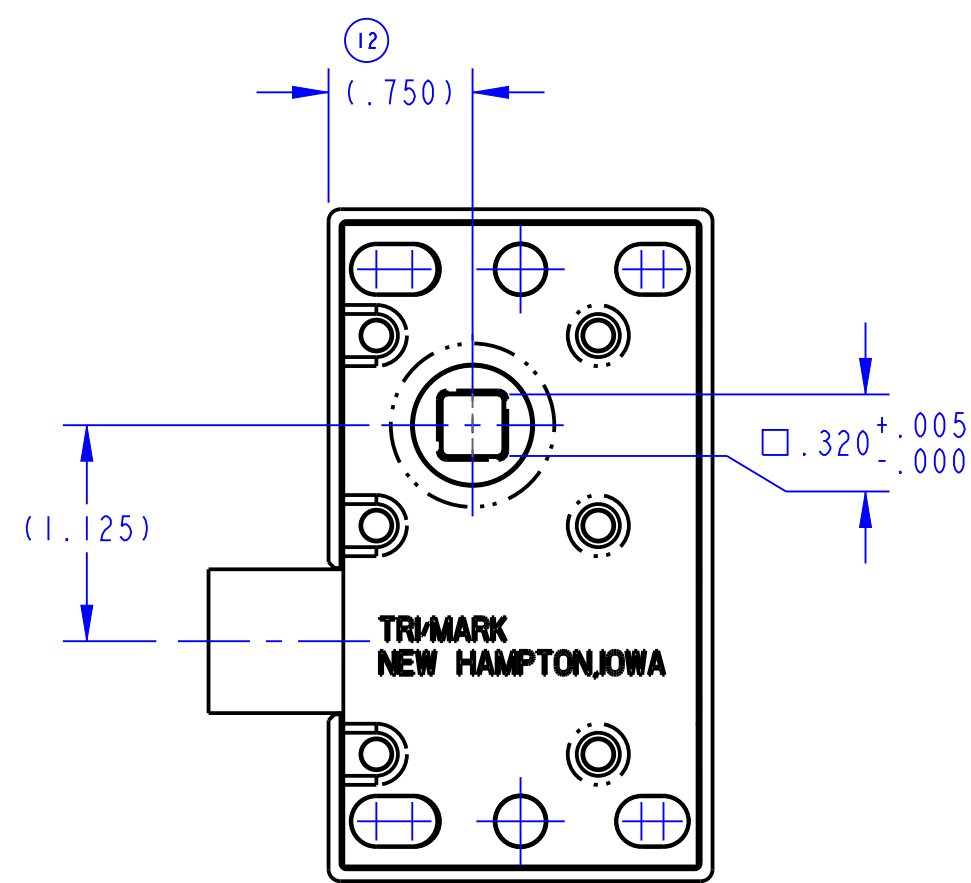
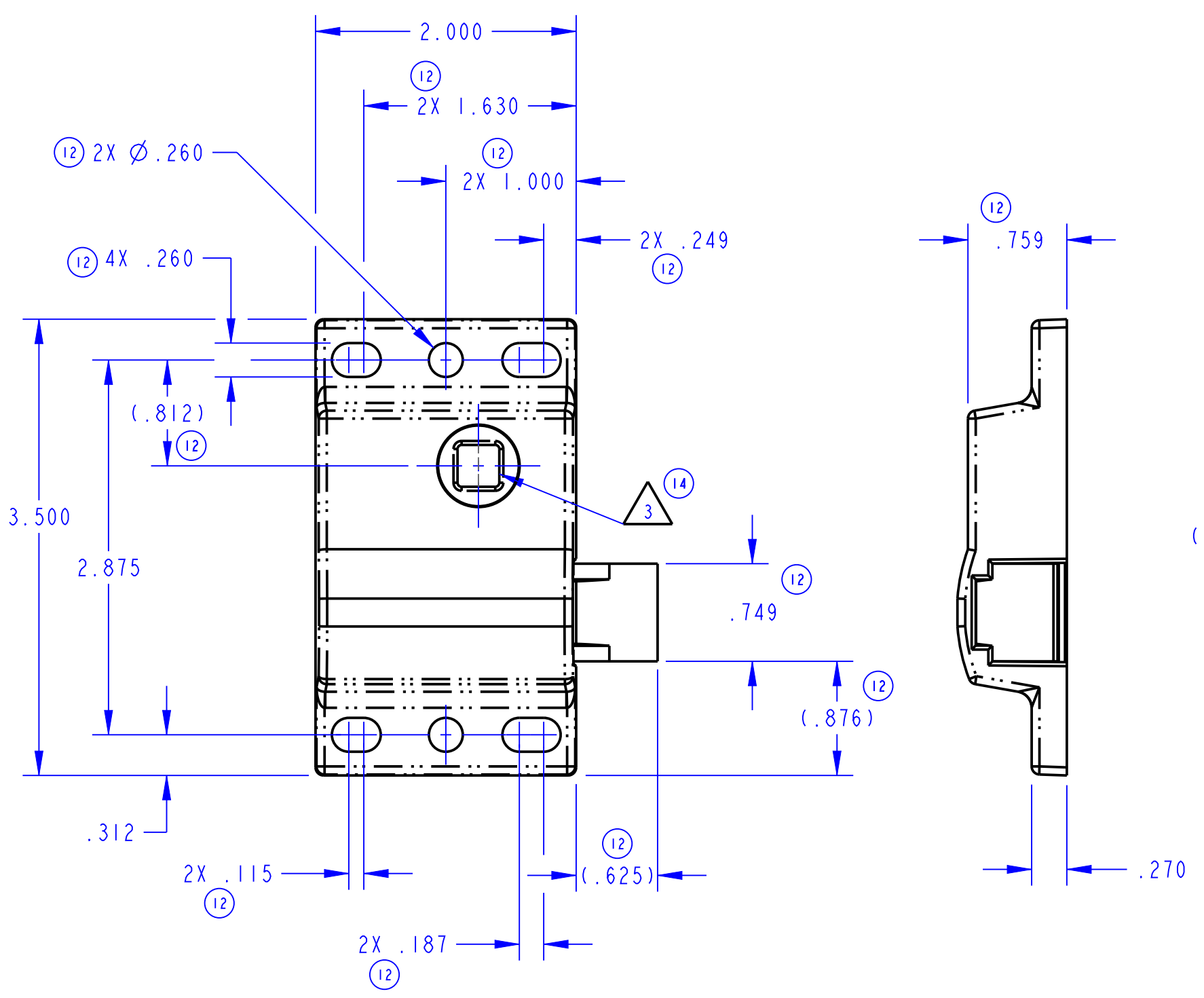


PART NUMBER	ITEM 1 HOUSING (QTY)	ITEM 2 PLATE (QTY)	ITEM 3 LCHBLT (QTY)	ITEM 4 DOG (QTY)	ITEM 5 SPRING (QTY)	FINISH
10117 ASM,LCH,PLUNGER BOLT,RH,ODEG	10115-00 (1)					N/A
10117-12 ASM,LCH,PLUNGER BOLT,RH,MGB,ODEG	10115-12 (1)	80554-15 (1)	80556-00 (1)	10116-00 (1)	80555-57 (1)	PAINT,BLACK,LOW GLOSS
10117-15 ASM,LCH,PLUNGER BOLT,RH,ODEG	10115-15 (1)					COAT PER ES-104

REVISION	ECN	ECN BY	DESCRIPTION
12	9391	ESS 4/30/96	REDRAWN ON CAD;ADDED VIEW; UPDATED PART NAME;REVISED NOTE 2;2X Ø .260 WAS Ø .260; 4X .260 WAS .260 TYP;(.750) WAS .750;(.812) WAS .812;2X 1.630 WAS 1.687;2X 1.000 WAS 1.000;2X .249 WAS .250;.749 WAS .750;(.876) WAS .875; (.625) WAS .625;2X .187 WAS .187;ADDED 2X .115;DELETED 2X .375;.759 WAS .750
13	21292	GDE 03/11/08	UPDATED: FINISH,FORMAT.
14	39566	GDE 2016-12-06	ADDED: NOTE 3. REMOVED: "-00". CONVERTED VIEW TO EXPLD ISO. UPDATED: FORMAT.



- NOTES:
- PLACE LUBRICANT BETWEEN ITEMS 1,2 AND 3.
 - FINISH IS FOR REFERENCE ONLY.
 - MAXIMUM MATERIAL CONDITION OF DRIVE BAR FOR MECHANISM NOT TO EXCEED $\square 0.312$.

DIMENSIONS
 X.X = $\pm .1$
 X.XX = $\pm .03$
 X.XXX = $\pm .015$

ANGLES
 $X^\circ = \pm 3^\circ$

INDICATES REQUIRED ASSEMBLY INFORMATION. UOS: THE -00 VERSION SHALL BE THE UNFINISHED VERSION OF PART SHOWN. UOS: ALL DIMENSIONS APPLY BEFORE COATING. (ASME Y14.5M, sec. 2.4.1)		TriMark 500 Bailey Avenue P. O. Box 350 New Hampton, Iowa 50659 U.S.A. Tel: 641-394-3188 Fax: 641-394-2392	
TOLERANCES UNLESS OTHERWISE SPECIFIED (UOS) ASME Y14.5M-1994		DRAWN BY: JRW 1982-09-29	PRODUCT CODE: F01 (060-0100)
		CHECKED BY: - PROJECT: L755	CUSTOMER: - CUSTOMER PART NUMBER: -
DO NOT SCALE DRAWING		PART WEIGHT: (0.62 LB)	SURFACE AREA: -
REF. T/M OP 4.20-2 FOR SUP. QUALITY REQ. REF. T/M OP 4.20-3 FOR INT. QUALITY REQ.		SIZE: C SCALE: 1.0 SHEET: 1/1	DESCRIPTION: SEE BOM PART NUMBER: 10117