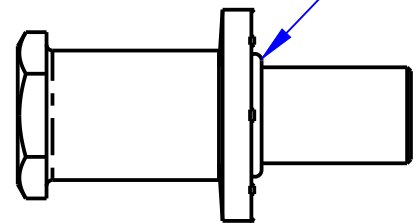
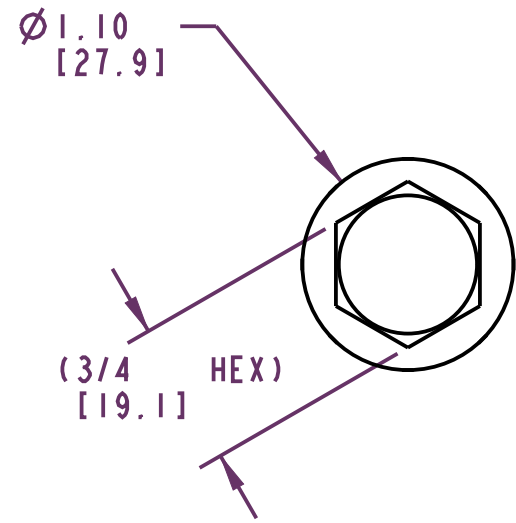
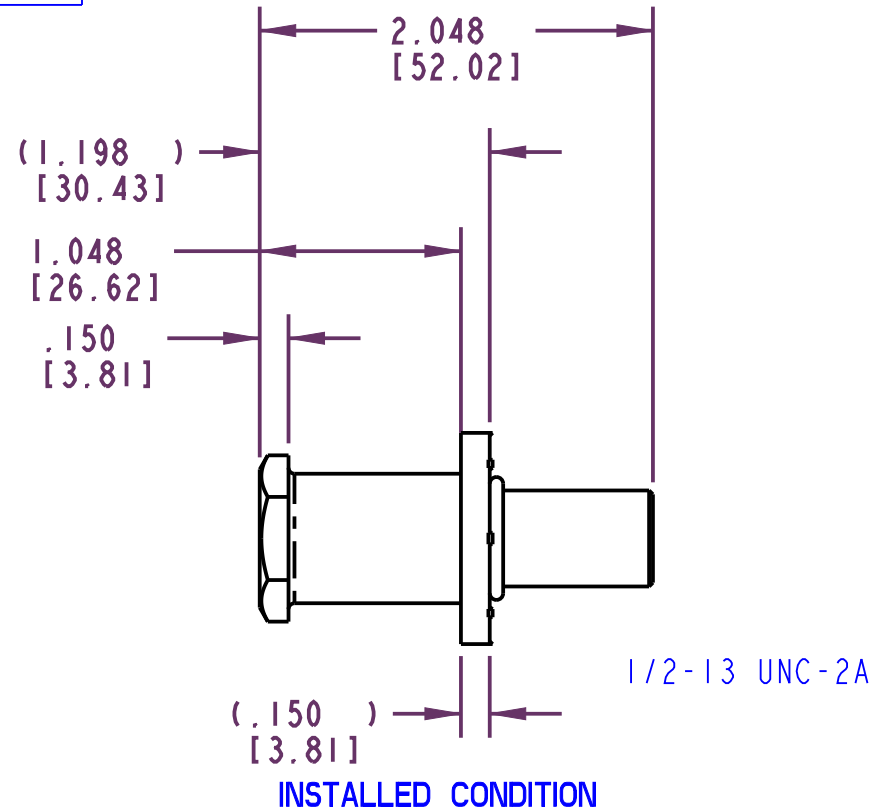


PART NUMBER				ITEM 1 BOLT (QTY)	ITEM 2 WASHER (QTY)	ITEM 3 O-RING (QTY)	PACKAGING
10722-16							STANDARD PACKAGING
10722-16-BX00				80852-16 (1)	17550-02 (1)	19680-01 (1)	SPECIAL PACKAGING 135 PCS/BOX

REVISION	ECO	BY	CHECKED	DESCRIPTION
8	19709	MLH 10/3/03	GDE 10/3/03	REVISED TO NEW STANDARD



UNINSTALLED CONDITION



NOTES:

- 1 WASHER ORIENTATION IMPORTANT.
- 2 FUNCTION OF O-RING (LOCATED APPROXIMATELY AS SHOWN) IS TO RETAIN THE WASHER UNTIL THE STRIKER BOLT IS INSTALLED.
- 3. DIMENSIONS IN [] ARE MILLIMETERS FOR REFERENCE ONLY.
- 4. PLATED THREADS TO BE INSPECTED WITH A 1/2-13 3A GO RING GAUGE.
- 5. INSTALLATION TORQUE 85 FT-LBS MINIMUM DEPENDING UPON SURFACE CONDITION OF THREADS.

● 1 INDICATES REQUIRED ASSEMBLY INFORMATION.

DRAWN BY	JRW	7/31/84	MATERIAL															
CHECKED BY			HEAT TREAT															
DESIGN ENG.			FINISH															
PROD. MNGR.			PROJECT	L83005S-1														
<p>TOLERANCES UNLESS OTHERWISE SPECIFIED ASME Y14.5M-1994</p> <table border="0"> <tr> <td>INCH</td> <td>MILLIMETER</td> </tr> <tr> <td>X.X ±.1</td> <td>X ±.3</td> </tr> <tr> <td>X.XX ±.03</td> <td>X.X ±.8</td> </tr> <tr> <td>X.XXX ±.010</td> <td>X.XX ±.25</td> </tr> </table> <p>ANGLES</p> <table border="0"> <tr> <td>X°</td> <td>±3°</td> </tr> <tr> <td>X.X°</td> <td>±1.0°</td> </tr> <tr> <td>X.XX°</td> <td>±.50°</td> </tr> </table>			INCH	MILLIMETER	X.X ±.1	X ±.3	X.XX ±.03	X.X ±.8	X.XXX ±.010	X.XX ±.25	X°	±3°	X.X°	±1.0°	X.XX°	±.50°	CUSTOMER	CUSTOMER PART NUMBER
INCH	MILLIMETER																	
X.X ±.1	X ±.3																	
X.XX ±.03	X.X ±.8																	
X.XXX ±.010	X.XX ±.25																	
X°	±3°																	
X.X°	±1.0°																	
X.XX°	±.50°																	
SIZE	B	PART WEIGHT	(.20 LBS)	SURFACE AREA														
DO NOT SCALE DRAWING		PRODUCT CODE	G03 (070-0200)	DESCRIPTION														
		REF. T/M OP 4.20-2 FOR SUP. QUALITY REQ. - REF. T/M OP 4.20-3 FOR INT. QUALITY REQ.	SCALE	FULL														
			REVISION	8														
			TYPE															
			PART NUMBER	10722-XX														

TriMark
500 Bailey Avenue
P. O. Box 350
New Hampton, Iowa 50659 U.S.A.
Tel: 641-394-3188
Fax: 641-394-2392

This drawing and the information contained herein is the property of TriMark Corporation and shall not be used for any purpose without our written consent.

ASSY, BLT/WSHR, 1.198, SHLDR, 1/2-13