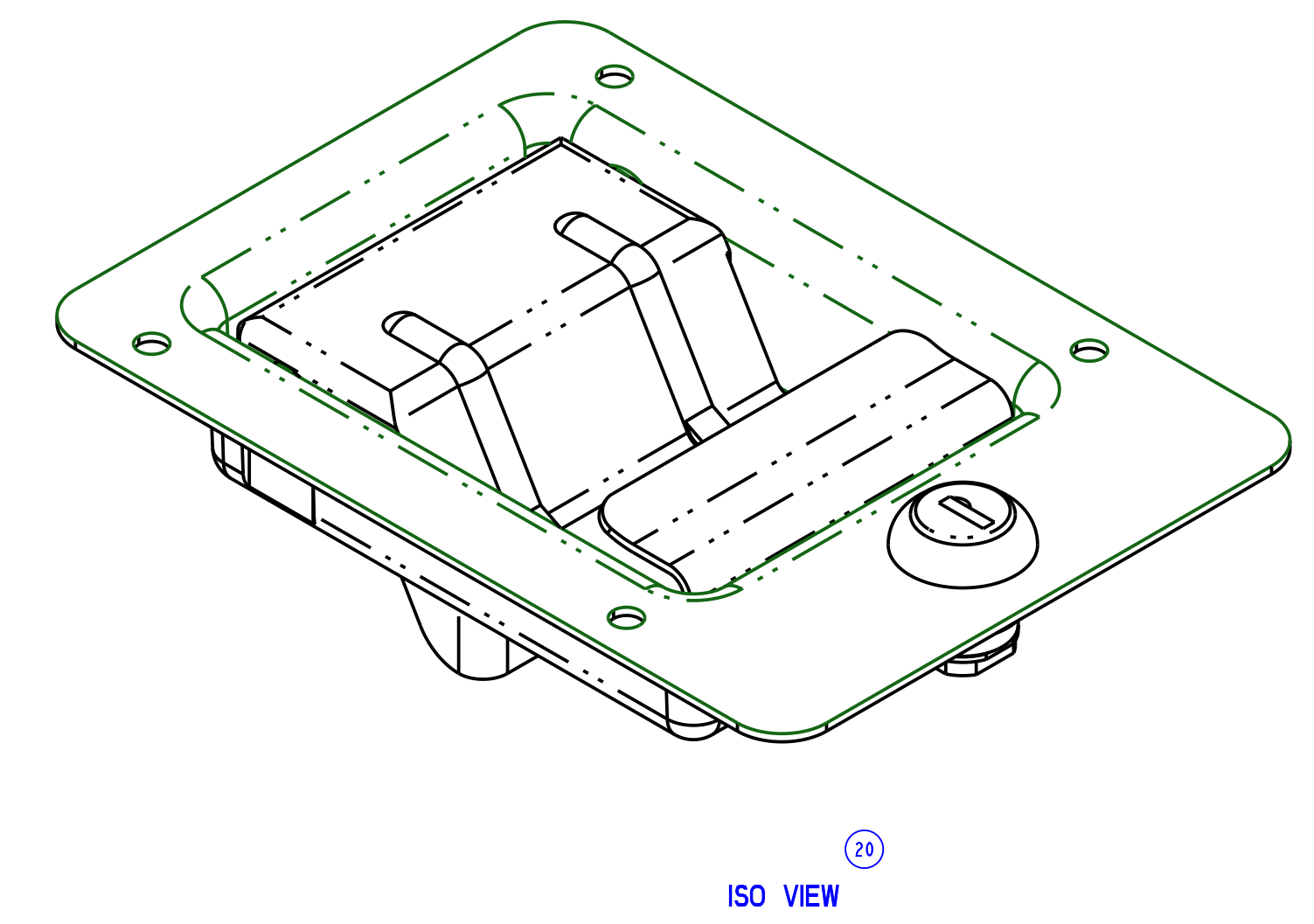
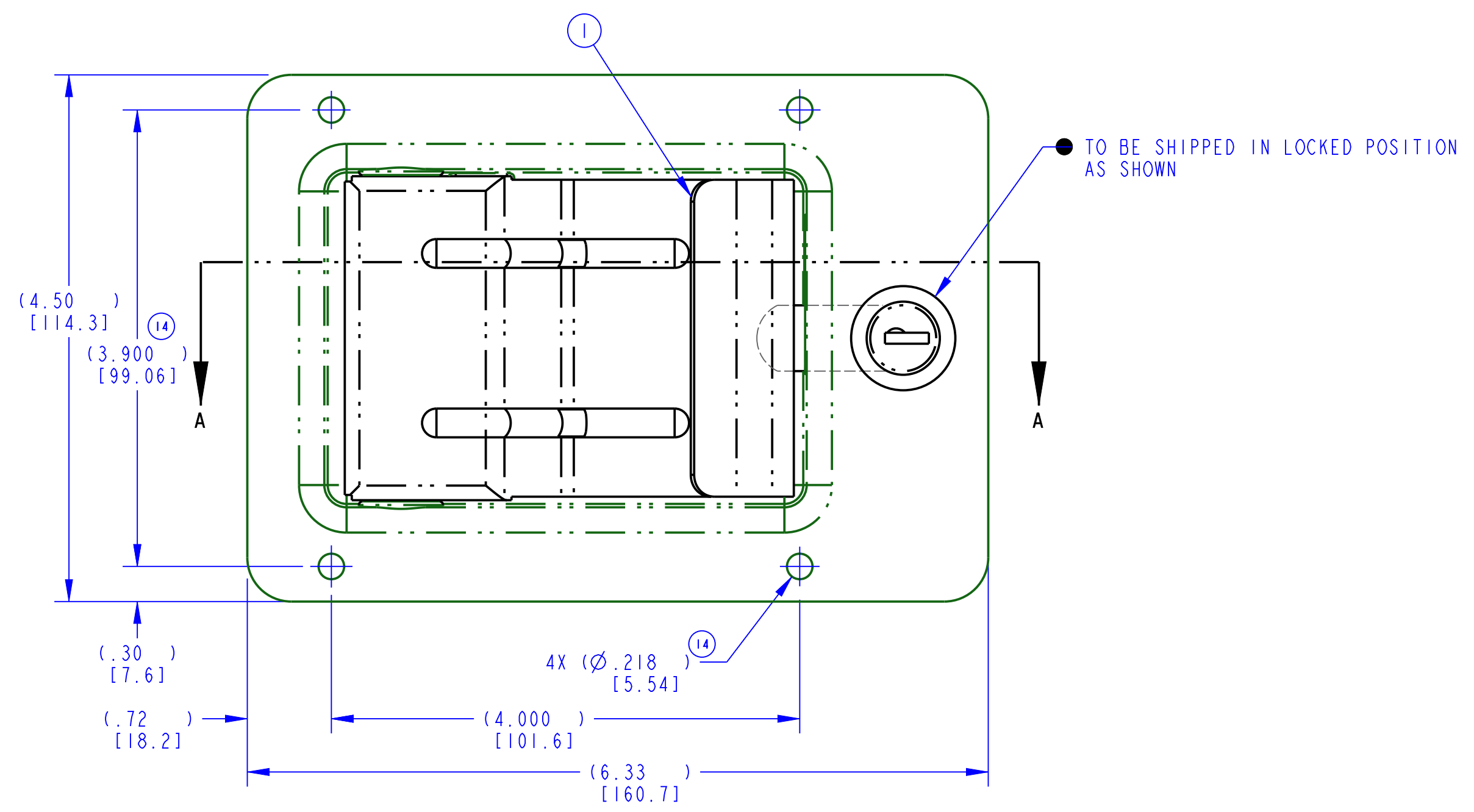
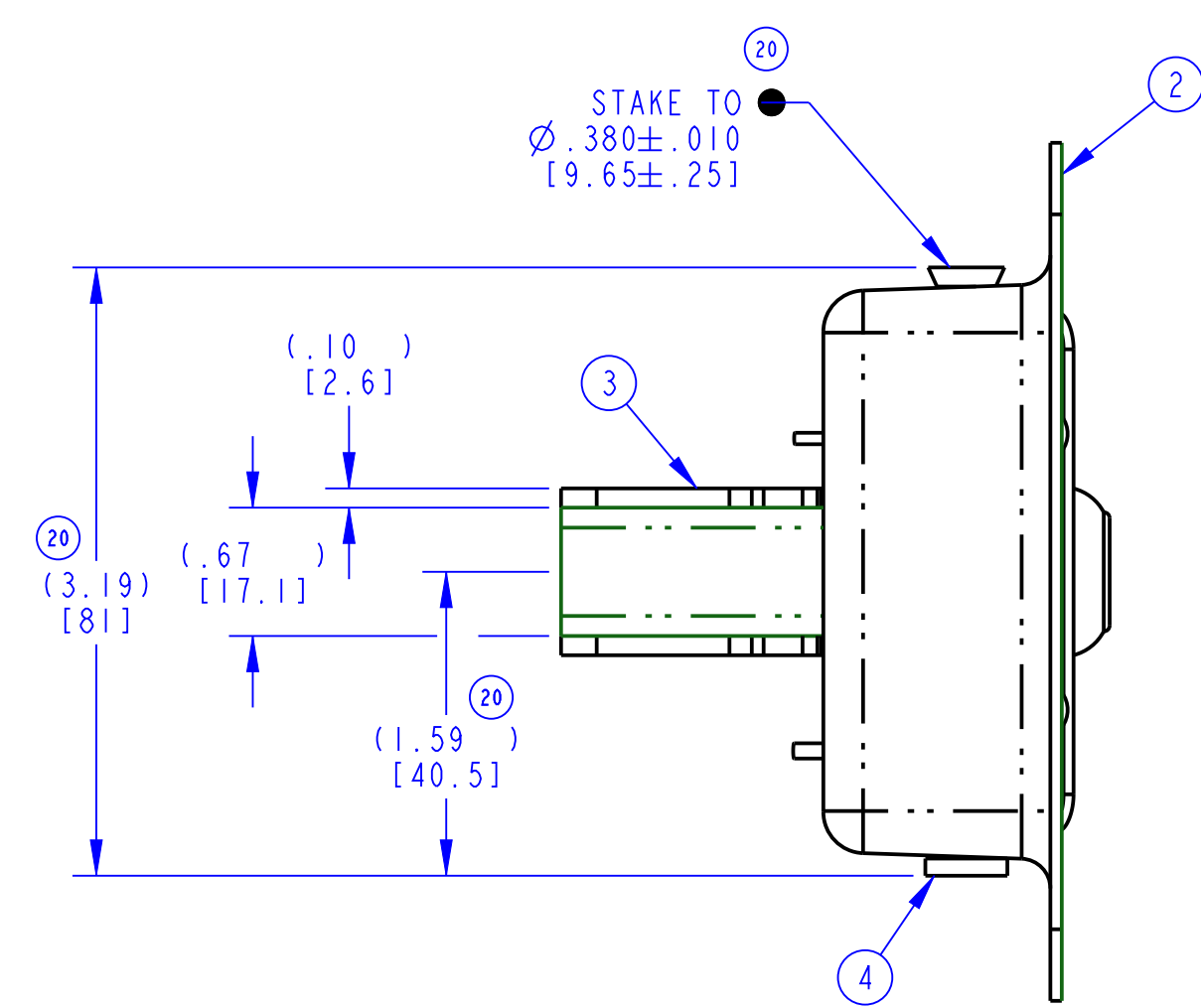
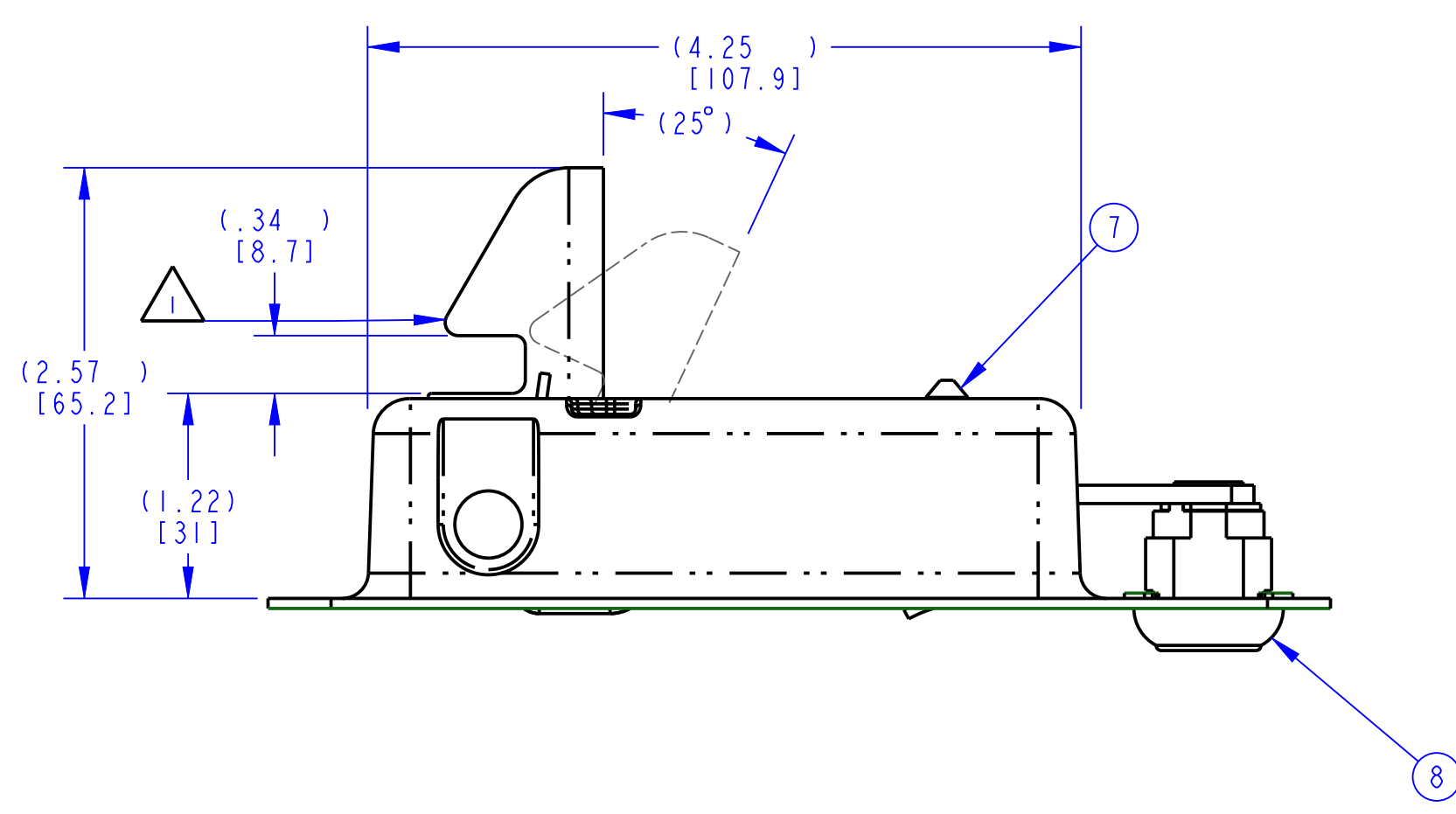
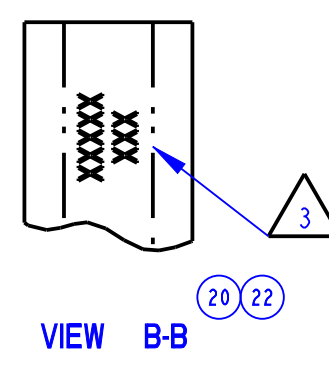
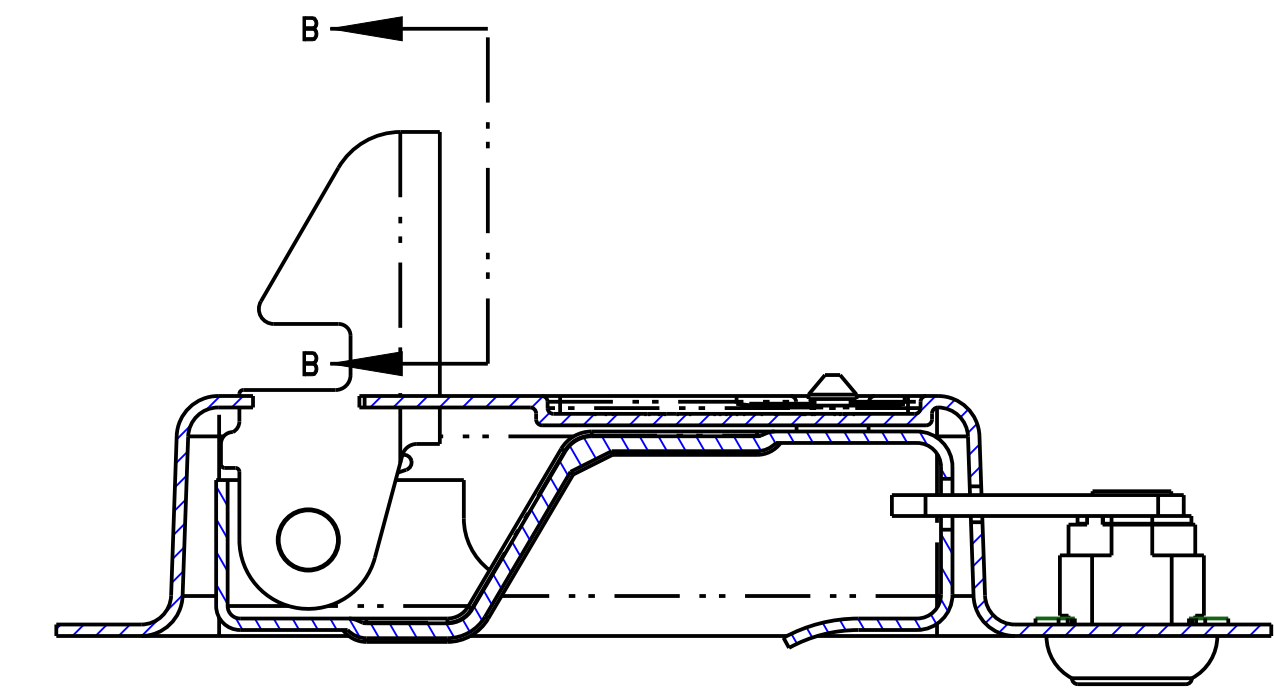
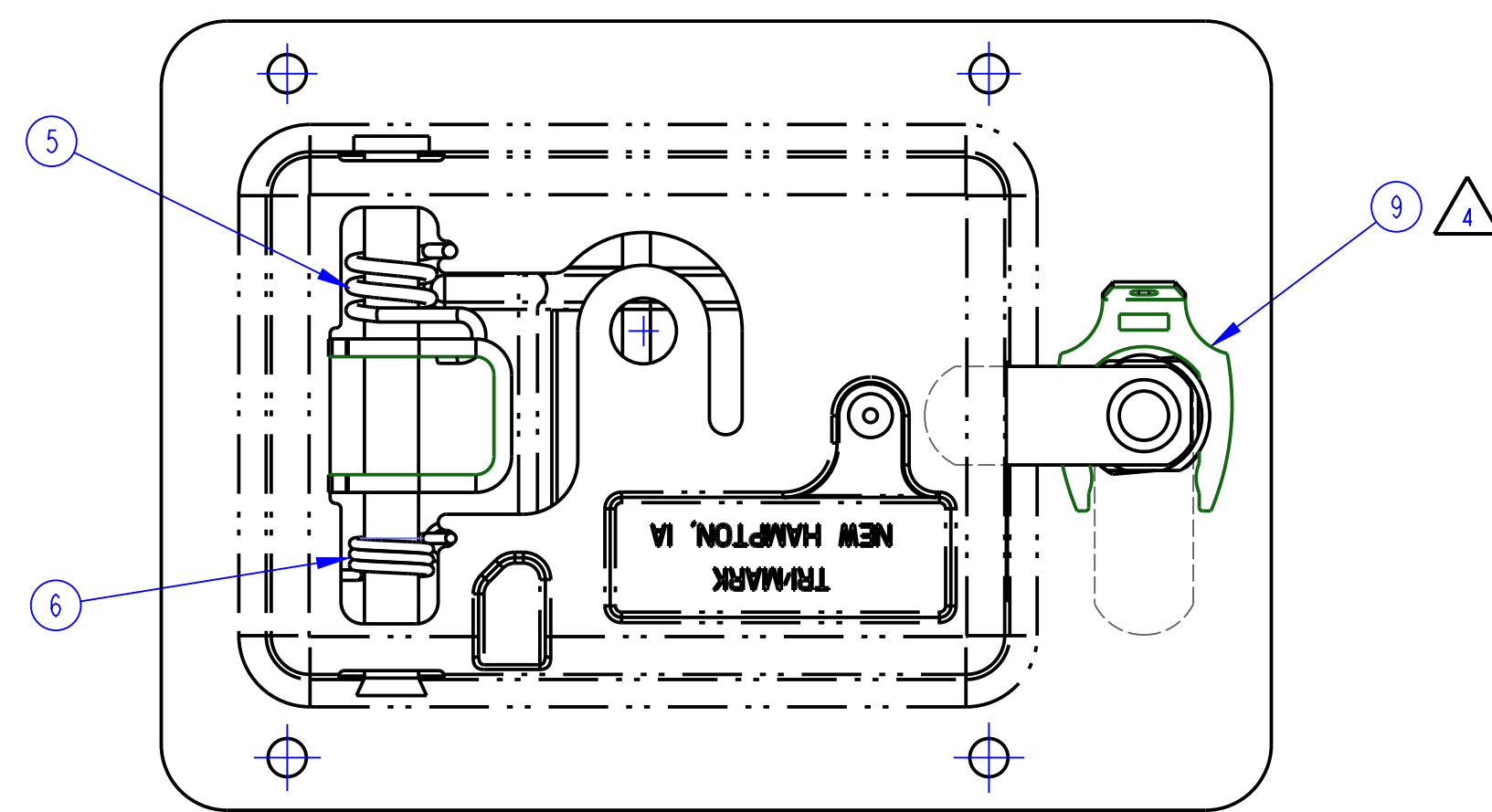
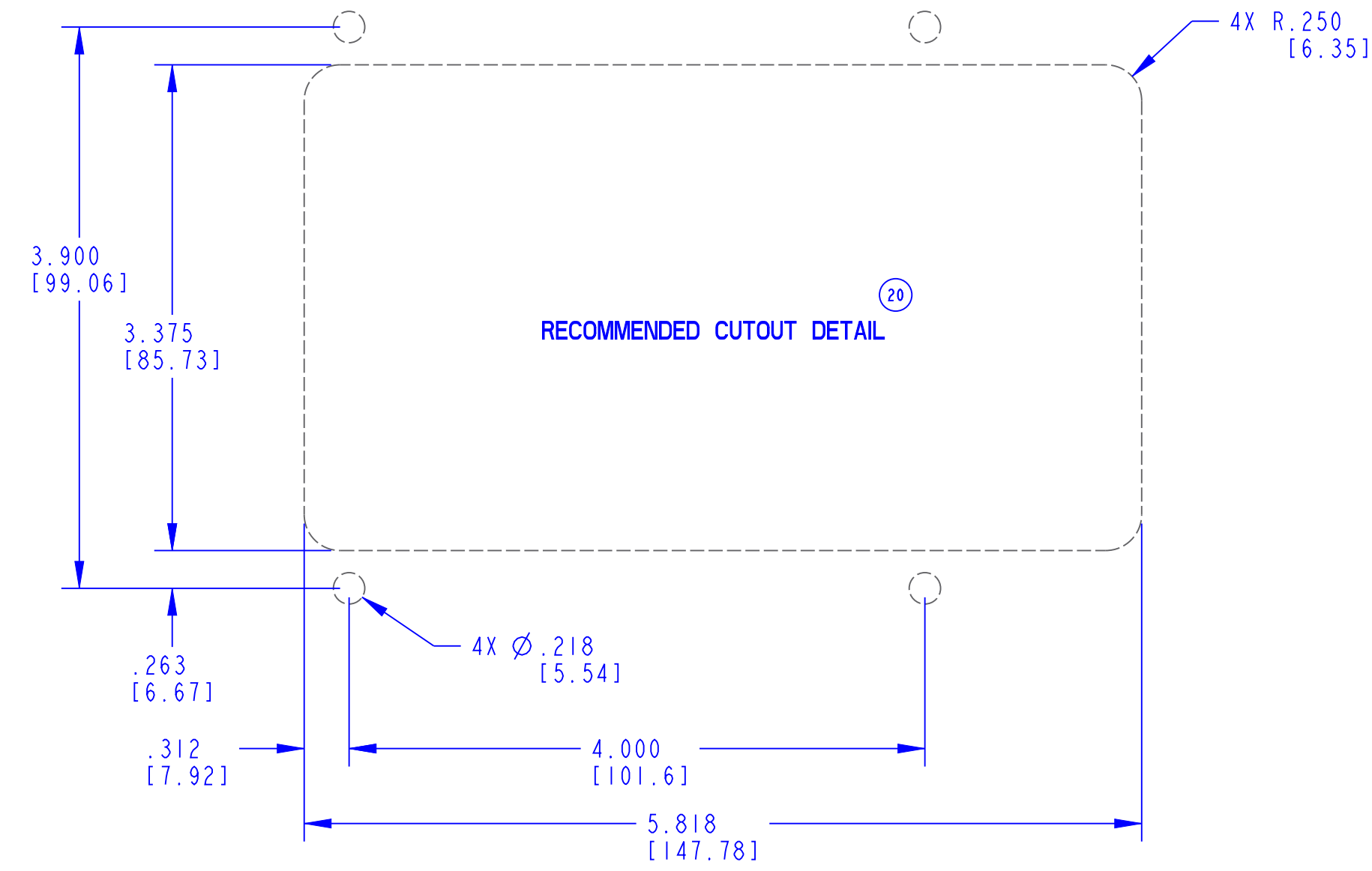


PART NUMBER DESCRIPTION	ITEM 1 PADDLE (QTY)	ITEM 2 HOUSING (QTY)	ITEM 3 HOOK (QTY)	ITEM 4 AXLE (QTY)	ITEM 5 SPRING (QTY)	ITEM 6 SPRING (QTY)	ITEM 7 BUMPER (QTY)	ITEM 8 LOCK (QTY)	ITEM 9 CLIP (QTY)	FINISH	KEYS SUPPLIED YES/NO (QTY)
11662-01 ASSY, LCH, COMPT, MGB, CTH, PVTG, D250								81190-08 (1)			NO
11662-02 ASSY, LCH, COMPT, MGB, CTH, PVTG, H800	81213-01 (1)	11601-01 (1)	11606-16 (1)	15196-01 (1)	81162-57 (1)	81163-57 (1)	80576-00 (1)	81190-02 (1)	15674-01 (1)	PAINT, BLACK, MEDIUM GLOSS	NO
11662-12 ASSY, LCH, COMPT, MGB, CTH, PVTG, CH751											YES (2)
11662-16 ASSY, LCH, COMPT, CTH, PVTG, CH751	81213-16 (1)	11601-16 (1)						81190-00 (1)		COAT PER ES-104	

REVISION	ECN	ECN BY	DESCRIPTION
14	9548	ESS 01/23/98	REDRAWN ON CAD; REVISED PART NAME; ADDED DIMS (4.000), (3.900) & (4X Ø.218)
15	10075	CM 01/31/97	REVISED -12 FINISH; 11601-01 WAS 11601-12; 81213-01 WAS 81213-12; ADDED NOTES 5 & 6
16	10271	JDP 12/05/97	15674-01 WAS 81191-15
17	10400	CM 3/23/98	REVISED PART NAME; DELETED NOTE 3 AND RENUMBERED
18	19547	TEB 1/13/03	REVISED MATERIAL CALLOUT; RELOCATE BOM/FINISH TABLE
19	19902	GRE 03/05/04	11601-01 WAS 11601-16; ADDED PART WEIGHT, PR DIMS, METRIC DIMS, NOTE 6; REVISED PRODUCT CODE.
20	20047	GRE 11/12/04	REMOVED: ITEM 5 & RENUMB BOM, NOTE 1 & RENUMBERED; DELETED: .074 MIN (BOTH ENDS); 15196-01 WAS 11607-16; ADDED: STAKE TO Ø.380±.010, ISO VIEW, KEYS SUPPLIED COLUMN ROTATED VIEW B-B 90°.
21	20229	GRE 11/12/04	ADDED: -01 VERSION.
22	37840	GRE 2012-04-18	HEX/TRIVALENT/FORMAT UPDATES.
23	38283	EPF 01/10/13	11662-02 ADDED



- NOTES:
- 1. 5±1 LB [2.27±.45 Kg] OF FORCE REQUIRED TO MOVE HOOK FROM NORMAL ASSEMBLED POSITION, APPLIED TO THE NOSE OF HOOK AS SHOWN BY ARROW. FINISH IS FOR REFERENCE ONLY.
 - 2. STAMP HOOK (ITEM 3) WITH PART NUMBER AND DATE CODE PER ES-121. LOCATE APPROXIMATELY AS SHOWN.
 - 3. CLIP (ITEM 9) MAY BE INSTALLED FROM EITHER DIRECTION.
 - 4. DIMENSIONS IN [] ARE MILLIMETERS FOR REFERENCE ONLY.

<p>INDICATES REQUIRED ASSEMBLY INFORMATION. UDS: THE "00" VERSION SHALL BE THE UNFINISHED VERSION OF PART SHOWN. UDS: ALL DIMENSIONS APPLY BEFORE COATING. (ASME Y14.5M, sec. 2.4.1.1)</p>		<p>TriMark 500 Bailey Avenue P. O. Box 350 New Hampton, Iowa 50659 U.S.A. Tel: 641-394-3188 Fax: 641-394-2392</p>	
<p>TOLERANCES UNLESS OTHERWISE SPECIFIED (UDS): ASME Y14.5M-1994 INCH MILLIMETER X.X ±.1 X.X ±.3 X.XX ±.03 X.XX ±.08 X.XXX ±.010 X.XXX ±.25</p>	<p>DRAWN BY: TMG 1988-07-19 CHECKED BY: SJG 1988-07-19</p>	<p>PROJECT: 87011-57 PRODUCT CODE: C12 (030-0500)</p>	<p>CUSTOMER PART NUMBER: - PART WEIGHT: (1.34 LB) SURFACE AREA: (19)</p>
<p>DO NOT SCALE DRAWING REF. T/M OP 4.20-2 FOR SUP. QUALITY REQ. REF. T/M OP 4.20-3 FOR INT. QUALITY REQ.</p>	<p>CUSTOMER: - PART NUMBER: - SIZE: D SCALE: 1.0 PART NUMBER: 11662</p>	<p>DESCRIPTION: SEE BOM</p>	