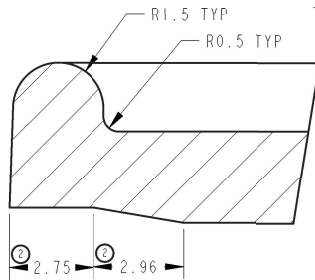
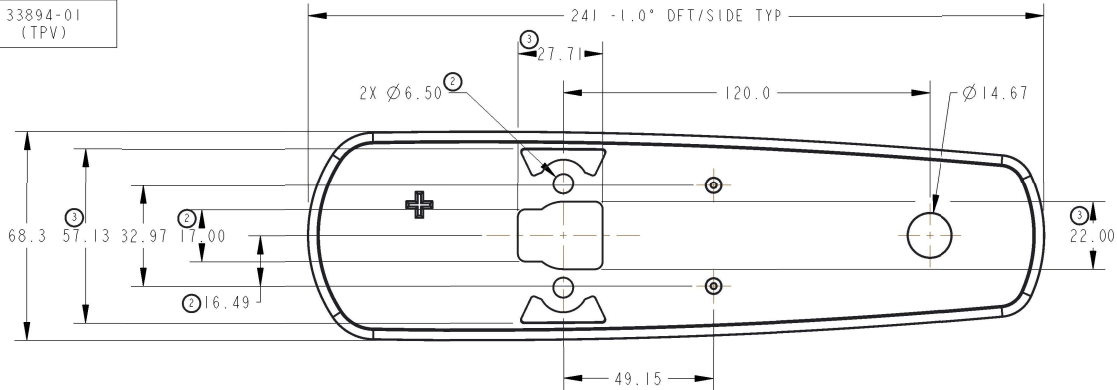
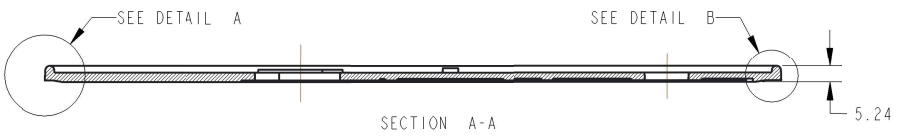


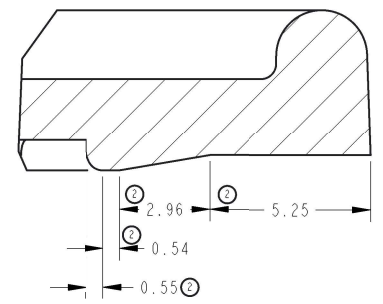
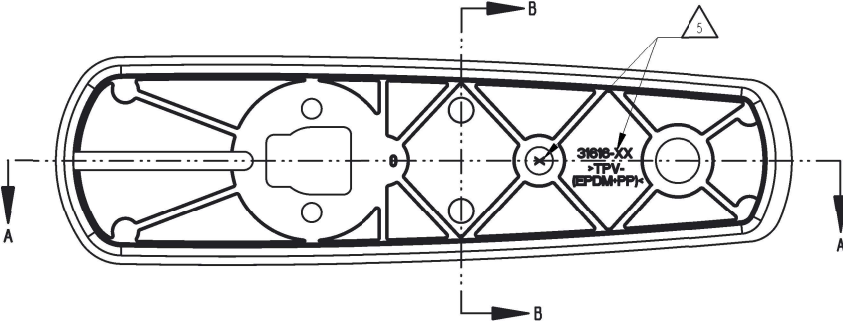
PART NUMBER	MATERIAL
31616-01 GASKET,PULL HNDL,PWR LOCK, STEEL MOUNT	35739-01 (TPV)
31616-02 GASKET,PULL HNDL,PWR LOCK, GLASS MOUNT	33894-01 (TPV)



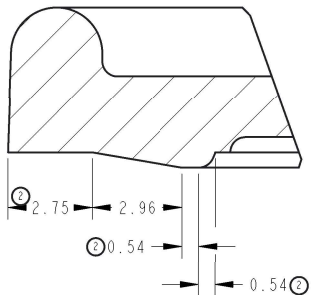
DETAIL A  
SCALE 8.00



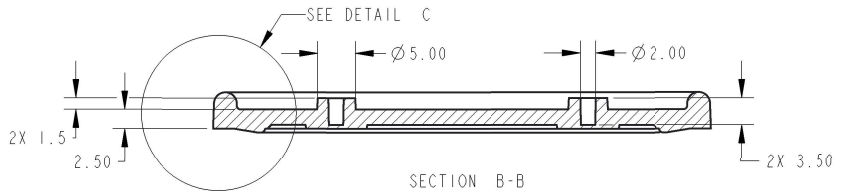
SECTION A-A



DETAIL B  
SCALE 8.00



DETAIL C  
SCALE 8.00



SECTION B-B  
SCALE 2.00

REVISION	ECN	ECN BY	DESCRIPTION
A	PRE-RELEASE	LPS 01/13/12	CREATED
B	PRE-RELEASE	LPS 04/20/12	REDRAWN WITH NEW GEOMETRY
C	PRE-RELEASE	LPS 04/09/13	ADDED RID TO AID FLOW
D	PRE-RELEASE	LPS 05/14/13	PART NO, IMPRESSION NO AND RECYCLE CODES ADDED.
E	PRE-RELEASE	LPS 05/14/13	UPDATED MATERIAL AND RECYCLE CODE
F	PRE-RELEASE	LPS 07/25/13	MATERIAL NO ADDED
G	PRE-RELEASE	LPS 09/19/13	ADDED 49.15
H	PRE-RELEASE	LPS 11/13/13	CHANGED PRODUCT CODE
J	PRE-RELEASE	LPS 11/20/13	ADDED HOLES IN VERSION -02
I	RELEASE	LPS 02/06/14	PREPARED FOR RELEASE
2	38929	LPS 02/28/15	43.7 MM DIAMETER CHANGED TO HOLE PATTERN FOR STEEL MOUNTING, 17.00, 24.00 AND 6.50 ADDED. DETAILS A, B AND C ADDED WITH DIMENSION TO MATCH NEW SEAL DESIGN. -02 VERSION MOVED TO PAGE 2 BUT REMAINS UNCHANGED.
3	39019	HSS 06/17/15	RELIEF ADDED AROUND THE CENTRE SQUARE HOLE AS COMPRESSION WAS CAUSING INTERFERENCE, PIPS ADDED TO HOLD THE SIDES AND REDUCE THE SPREAD OF THE GASKET 22.00, 57.13 ADDED 27.71 WAS 24.00.
4	39121	HSS 09/29/15	-01 MATERIAL 35739-01 WAS 33894-02.

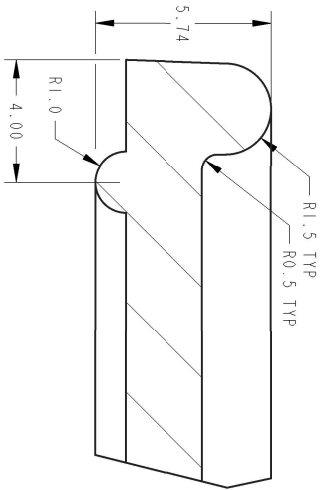
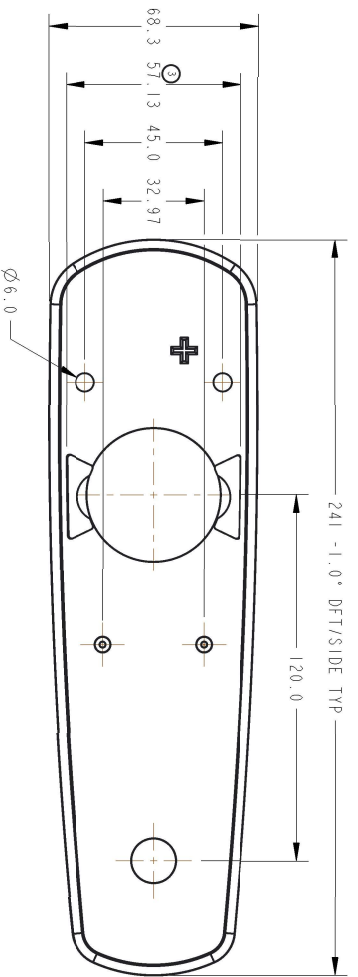
-01 SHOWN

SHEET 1 OF 2 METRIC

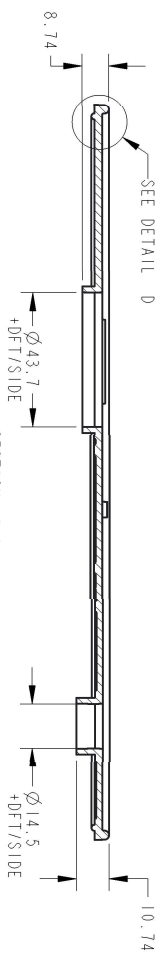
- NOTES: UNLESS OTHERWISE SPECIFIED:
- 1.0° DFT/SIDE TYPICAL.
  - ALL FILLETS AND RADII ARE TO BE R0.5.
  - REFER TO MODEL FOR DIMENSIONS NOT SHOWN.
  - PART MUST MATE UP WITH PART NUMBER 22321-01 AND 35342-01.

5. TRIMARK, PART NO, RECYCLING CODE AND IMPRESSION NUMBER TO BE 3MM HIGH TEXT RAISED 0.25MM. LOCATE APPROXIMATELY AS SHOWN.

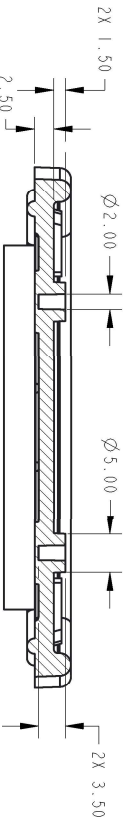
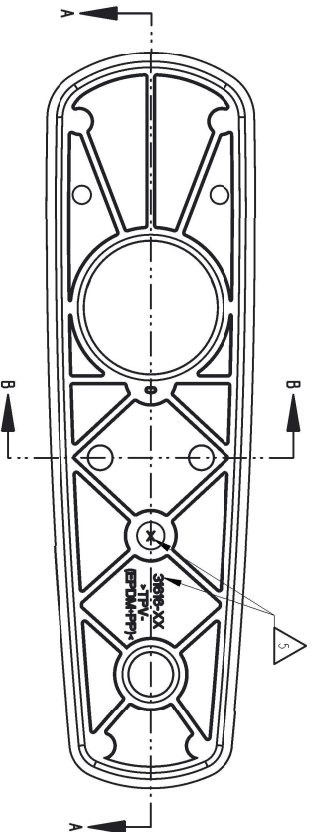
<p>INDICATES REQUIRED ASSEMBLY INFORMATION:          UOS: THE "00" VERS ON SHALL BE THE UNFINISHED VERSION OF PART SHOWN          UOS: ALL DIMENSIONS APPLY BEFORE COATING. (ASME Y14.5M-1994, sec. 2.4.1)</p>		<p><b>TriMark</b>          500 Bailey Avenue          P. O. Box 350          New Hampton, Iowa 50659 U.S.A.          Tel: 641-394-3188          Fax: 641-394-2392</p>									
<p><b>TOLERANCES UNLESS OTHERWISE SPECIFIED (UOS)</b>          ASME Y14.5M-1994</p> <table border="0"> <tr> <td>INCH</td> <td>MILLIMETER</td> </tr> <tr> <td>X .1 ±.1</td> <td>X ±.3</td> </tr> <tr> <td>X .XX ±.03</td> <td>X .X ±.8</td> </tr> <tr> <td>X .XXX ±.010</td> <td>X .XX ±.25</td> </tr> </table>		INCH	MILLIMETER	X .1 ±.1	X ±.3	X .XX ±.03	X .X ±.8	X .XXX ±.010	X .XX ±.25	<p>DRAWN BY: LPS 13-JAN-2012          CHECKED BY: CRZ 30-JUL-2013          PROJECT: 11132          PRODUCT CODE: K07 (100-7000)</p>	
INCH	MILLIMETER										
X .1 ±.1	X ±.3										
X .XX ±.03	X .X ±.8										
X .XXX ±.010	X .XX ±.25										
<p>ANGLER          X ° ±.3°          X X° ±1.0°          X XX° ±.50°</p>		<p>CUSTOMER: _____          CUSTOMER PART NUMBER: _____</p>									
<p>DO NOT SCALE DRAWING</p>		<p>DESCRIPTION: GASKET,PULL HNDL,PWR LOCK</p>									
<p>REF. T/M OP 4.20-2 FOR SUP. QUALITY REQ.          REF. T/M OP 4.20-3 FOR INT. QUALITY REQ.</p>		<p>PART WEIGHT: (50.04 G)          SURFACE AREA: (32646.56 MM<sup>2</sup>)          SIZE: C          SCALE: 0.80          PART NUMBER: 31616</p>									



DETAIL D  
SCALE 8.00



SECTION A-A  
SCALE 0.80



SECTION B-B  
SCALE 2.00

-02 SHOWN



SHEET	2/2	SIZE	C	SCALE	1.0	PART NUMBER	31616	REVISION	4
-------	-----	------	---	-------	-----	-------------	-------	----------	---